



NATIONAL ASSOCIATION OF STATE ADMINISTRATORS
AND SUPERVISORS OF PRIVATE SCHOOLS

Navigating Regulatory Changes: Ensuring Compliance In Professional Licensure

Ping Jiang & Carly Devenburgh
University of Kentucky

2024 NASASPS Annual Conference

April 7-10 | Charleston, SC

Presenters



Ping Jiang, PhD

Assistant Director for
Global Compliance

UK Distance Learning



Carly
Devenburgh

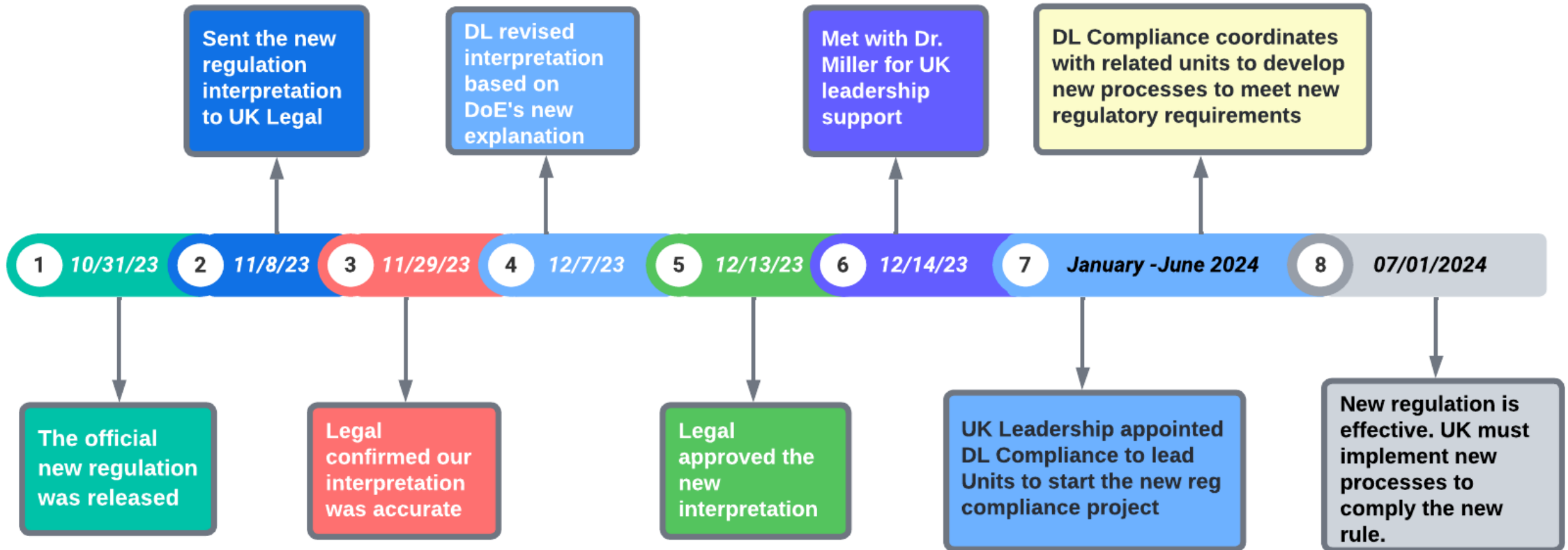
Senior Compliance
Coordinator

UK Distance Learning

Agenda

- 34 CFR 668.14(b)(32)
PPA Certification
 - 34 CFR 668.43(a)(5)(v)
Public Disclosure
 - 34 CFR 668.43(c)
Direct Disclosure
- Sample: University of Kentucky New Regulation Analysis and Planning
 - Q&As
 - Roundtable Discussions

Timeline



Thinking Tree

Factors identifying Distance Education Licensure Programs for PPA Certification purposes



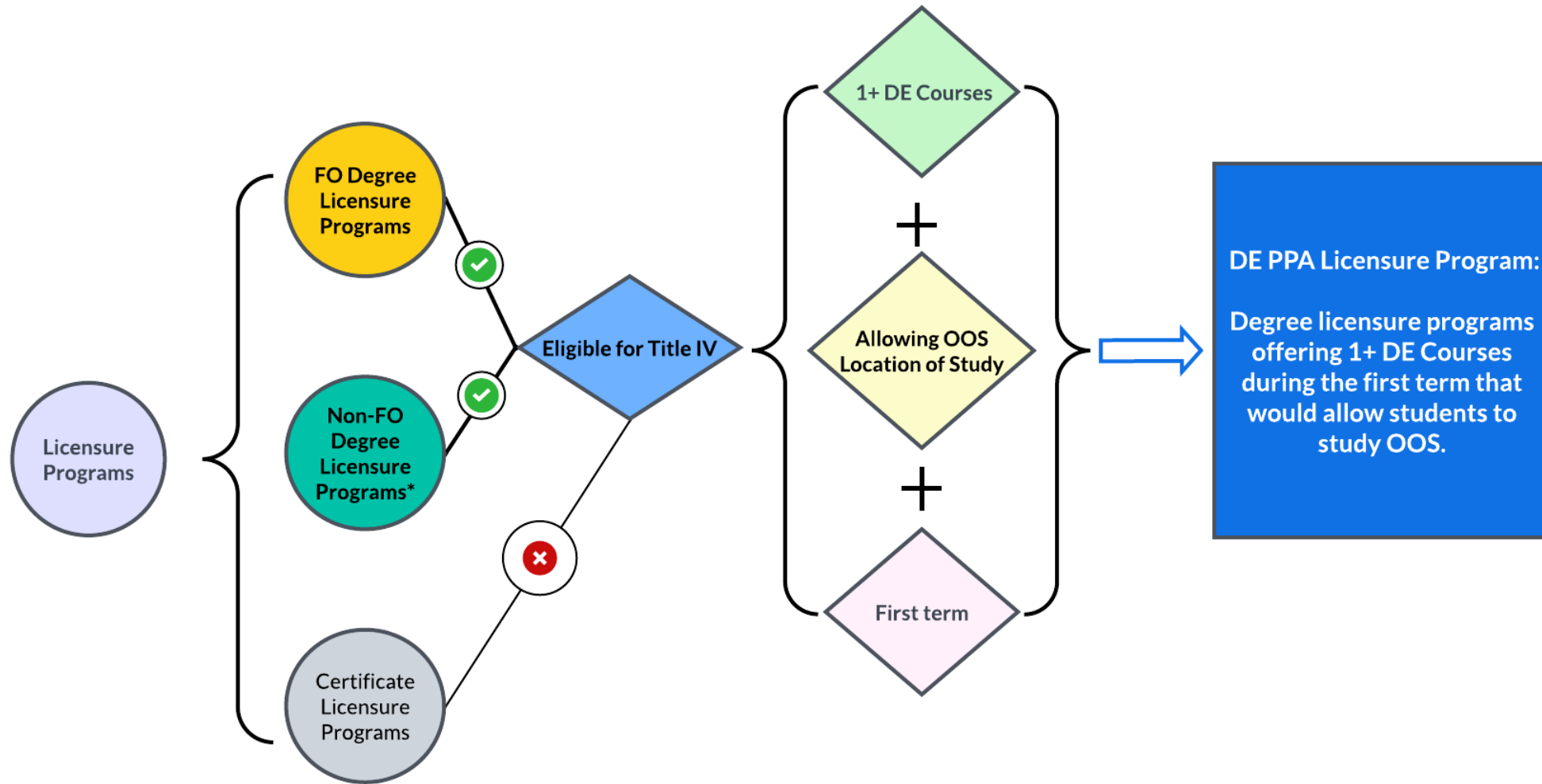
Screening Flows:

Pre Application submission or
Post Application Submission

Campus stakeholders:

- Licensure programs
- Admissions
- Institutional Research & Data
- IT
- Financial Aid
- Registrar
- Program advisors, recruiters, etc.

Paths to Distance Education PPA Licensure Programs



Proposed Plan to Fulfill PPA Certification

DL Compliance and Licensure Programs

Reconfirm all state licensure programs

Identify and provide the DE-PPA Licensure program list

Issue necessary institutional policies to facilitate the new reg planning

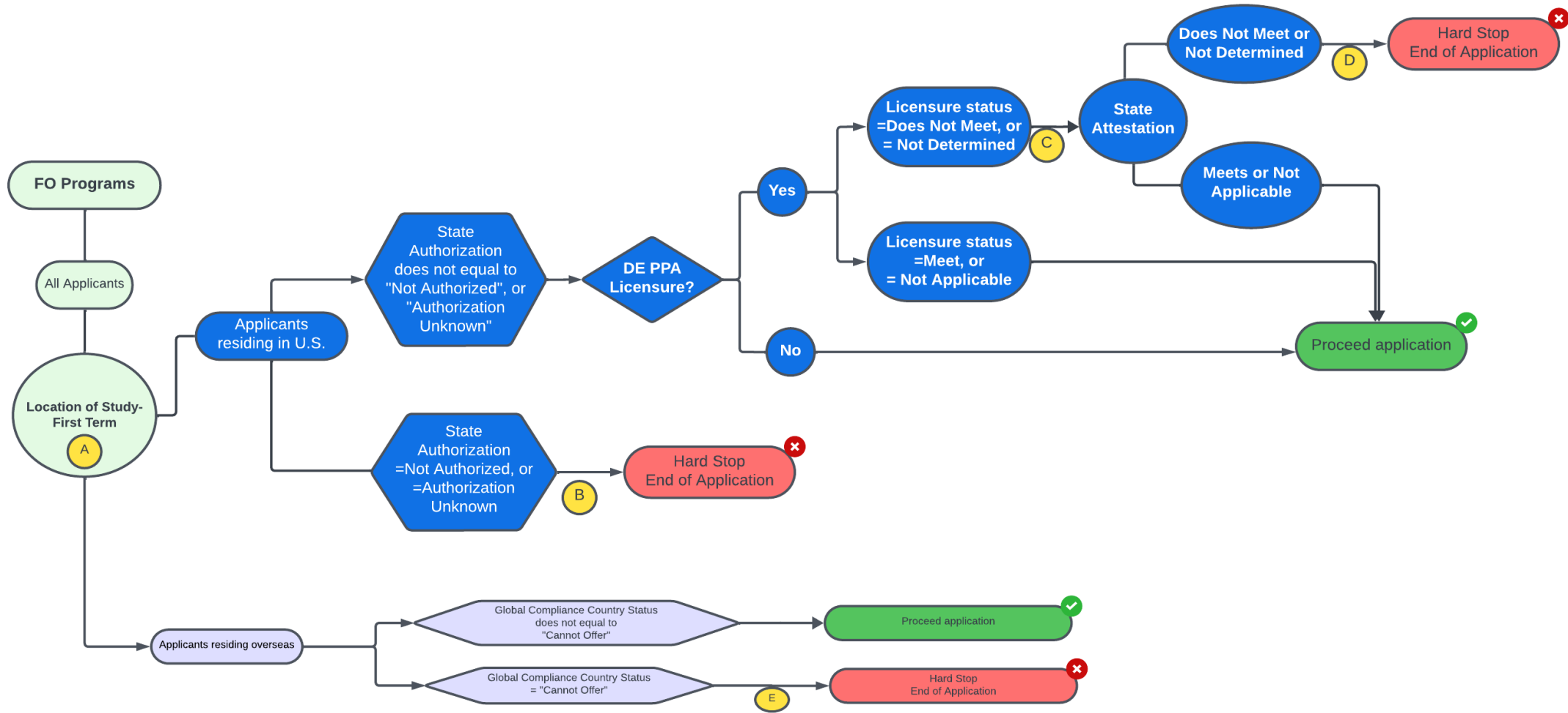
ITS, Admissions, & IRADs...

Create new PPA Certification Screening and Attestation Processes

Financial Aid

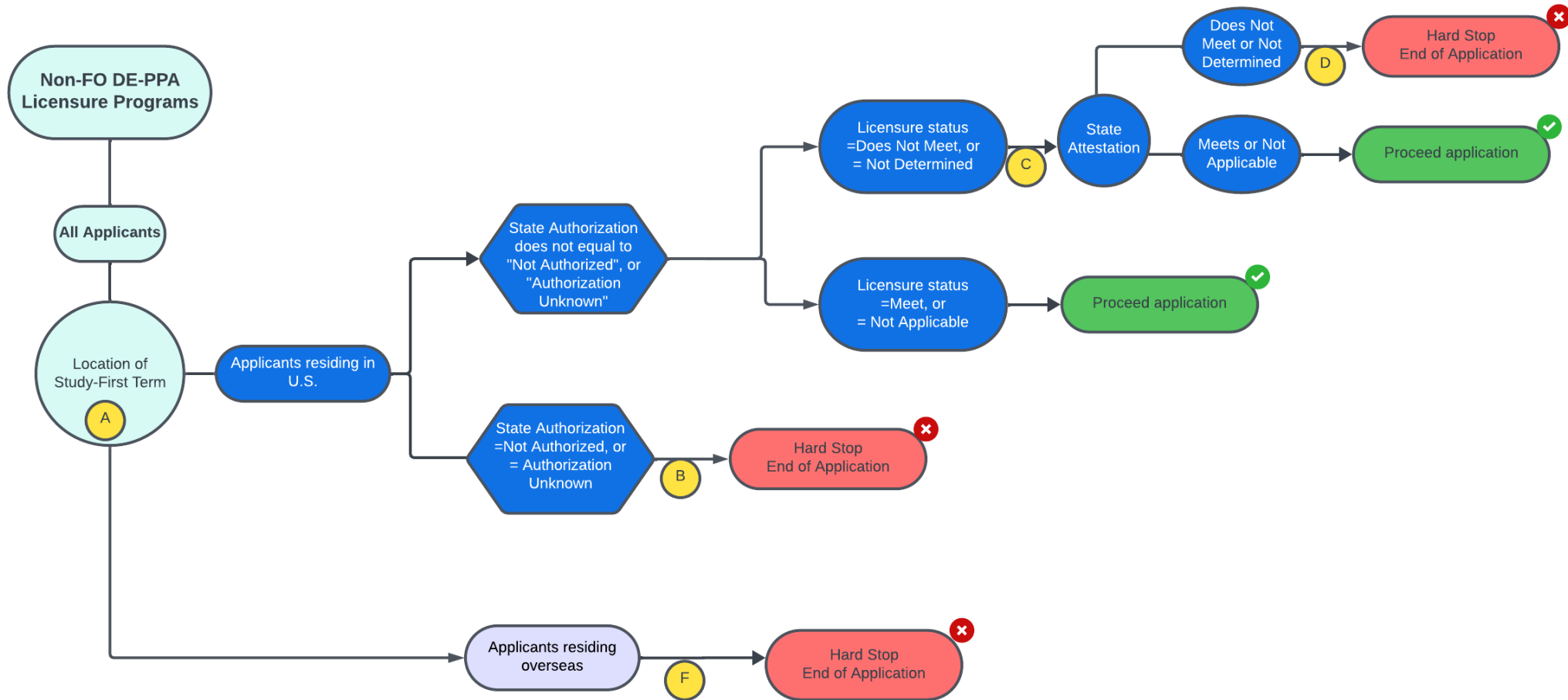
File PPA Certification

PPA Certification Application Screening Design - Fully Online Programs



PPA Certification Application Screening Design

- Non-FO DE PPA Licensure Programs



Q&A on UK's Planning



Roundtable Discussion: Identifying Licensure Programs



- How do you identify “professional licensure programs” at your institution?
 - Initial licensure vs post licensure
 - Certificate programs (GC, or Ext Cert.)
 - National credential
 - “Designed” or “Advertised”
 - Field is not regulated in home state
 - ...

Roundtable Discussion: Program Inventory

- What kind of licensure programs at your institution will undergo location screening and attestation for PPA Certification purposes?

For example, all licensure programs, only fully online licensure programs, or any licensure programs offering one or more DE courses...etc.

Roundtable Discussion: Location Screening

- How does your institution plan to screen first-term location of study?
- How are you handling DE licensure programs housed in external application forms?
- How are you handling Pre-licensure programs (e.g., pre-Nursing)?
- How are you handling Teacher Education Programs (TEP)?

Roundtable Discussion: Attestation



- How is your attestation process designed to meet the requirements?
- What are the key elements of your Attestation template?

Roundtable Discussion: Disclosure



- Public Disclosure
 - Which licensure programs (e.g., all, DE licensure programs only, etc.)?
 - licensure statuses?
- Direct Disclosure
 - Which licensure programs (e.g., all, DE licensure programs only, etc.)?
 - Process automated?



NATIONAL ASSOCIATION OF STATE ADMINISTRATORS
AND SUPERVISORS OF PRIVATE SCHOOLS

Thank you!

Ping Jiang, PhD | shuiping.jiang@uky.edu

Carly Devenburgh | Carly.devenburgh@uky.edu

2024 NASASPS Annual Conference

April 7-10 | Charleston, SC