

Colorado Department of Higher Education

Executive Director
Angie Paccione, PhD

Colorado Commission on Higher Education

Office of Industry Partnerships
Beverly Jones

CollegelInvest & College Assist
Chief Executive Officer
Angela Baier
(33 FTE CollegelInvest)
(4 FTE College Assist)

History Colorado (StateHistorical Society)
Executive Director
Dawn DiPrince
(120.5 FTE)
(600 Volunteers)

Chief Student Success & Academic Affairs Officer
Kim Poast, PhD

Chief Educational Equity Officer
Roberto Montoya, PhD

Chief Performance Officer
Michael Vente

Chief Occupational Education Officer/Director
Lorna Candler

Chief Research Officer
Lauren Ramsay, PhD

Deputy Director & Chief of Staff
Ben Boggs, PhD

Chief Operating Officer
Vacant

Chief Financial Officer
Mitchell Karstens

- Senior Director of Student Success & P20 Alignment
Carl Einhaus
- GearUp Program Director
Christina Ingrum
- Director of Student Transitions and Degree Completion Initiatives
Peter Fritz
- COSI Senior Director & Operations Officer
Cynthia Armendariz, PhD
- Senior Director of Academic Pathways & Innovation
Chris Rasmussen, PhD
- Director of Educator Preparation
Brittany Lane, PhD
- Director of ECE Workforce Policy
Sondra Ranum
- Director, Office of Private Postsecondary Education
Heather DeLange
- Academic Policy Officer and Advocate
Christina Carrillo
- Director of Open Education and Learning Innovation
Chealsye Bowley
- Director of Collegiate Apprenticeships
Renee Welch
- Data and Research Analyst
Richard Mizerak
- Healthcare Apprenticeship Consultant
Debbie Shackelford
- Healthcare Apprenticeship Consultant
Vacant

Coordinator of Innovation Programs
Jack Wolfink

Educator Preparation Pathways Specialist
Sam Fogleman

- Director of College Pathways and Communications
Meghan Cave
- Director of Budget and Grant Compliance
Kelly Zhang
- Application Developer
James Anderegg
- 20 GearUp Advisors in the field
- COSI Program Director
Crystal Annan
- Senior Program Manager
Carla Castillo
- Program Manager
Jacque Granados
- Program Manager
Kolby Knupp
- Program Manager
Michael McArthur
- Program Coordinator
Mariana DelMonte-Gladstone
- Program Coordinator
Marie Snow
- Grant Accountant
Kelly Perry-Cochrant
- Applications and Database Developer
Earl Green

- Deputy Director & Compliance Officer
Mary Kanaly
- Compliance Investigator
Bradlee Uyemura
- Program Specialist
Rachel Acosta
- Program Specialist
April Cordova
- Program Specialist
Bernadette Esquibel
- Program Specialist
Vacant
- Program Specialist
Carrie Harding
- Division Specialist
Kristi Connors

- Senior Director of Research and Data Governance
Michael Vente
- Talent Pipeline Analyst
Caitlin McKennie
- Senior Director of Data Systems & Applications
Maggie Yang
- SURDS Manager
Chris Ammons
- Research & Data Analyst
Vacant
- Database Systems & Web Developer Manager
Jay Shah

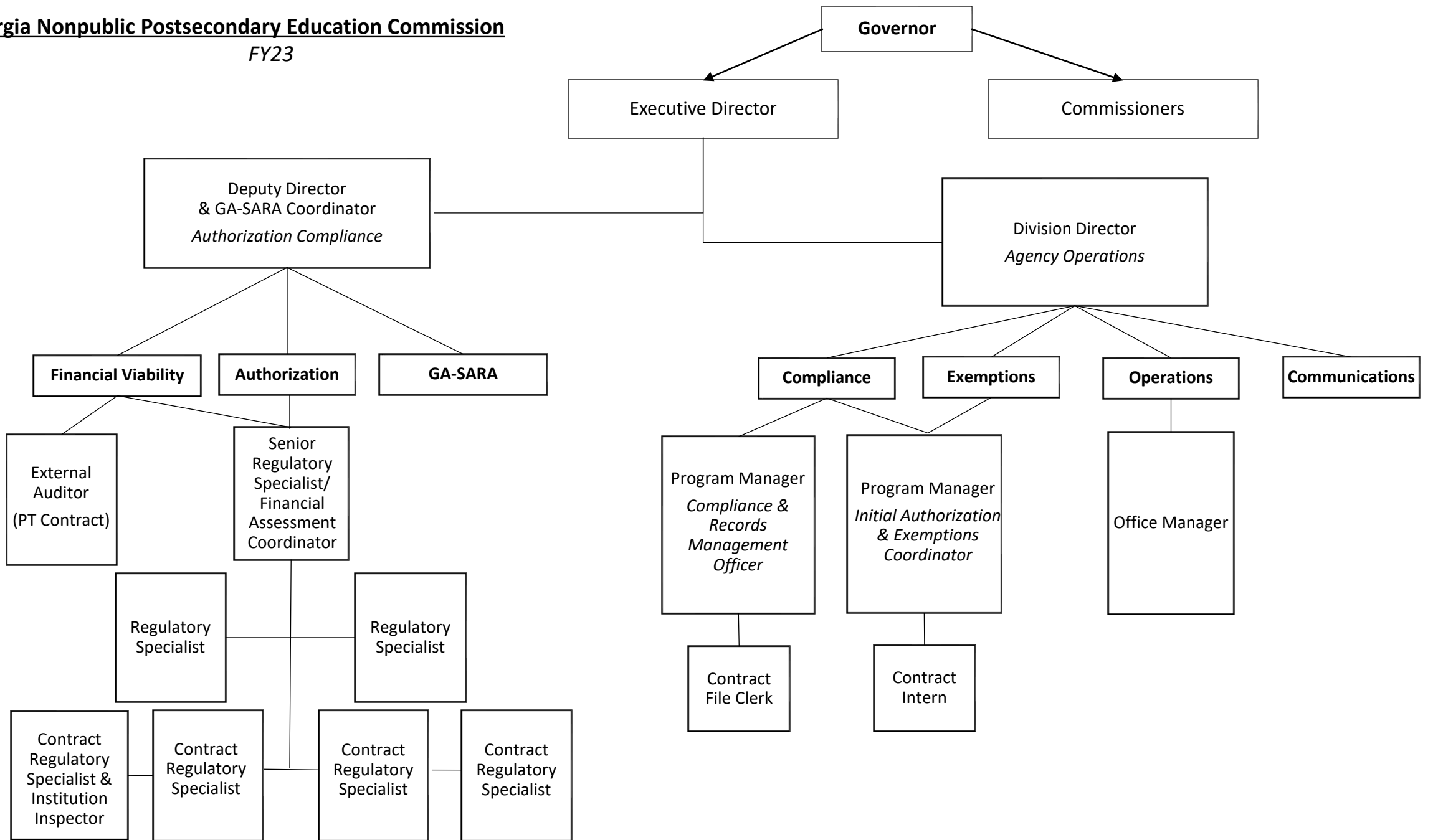
- Executive Assistant, Office & Operations Manager
Katrina Weitzel
- Receptionist
Bernadette Esquibel
- Senior Director of Communications & Public Information Officer
Megan McDermott
- Communications Specialist
Edward Quinones
- Graphic Designer
Beth Hunter
- Legislative Liaison
Chloe Figg

- Director of Information Technology
Jimmy Rogers
- Special Projects/Study Colorado Director
Erin McDonnell
- Director of Outreach and Financial Education
Freddy Burciaga
- Outreach Program Coordinator
Twyla Esquibel

- Senior Finance Analyst
Lauren Gilliland
- Lead Finance Analyst
Emma Fedorchuk
- Lead Finance Analyst
Rebecca Massey
- Lead Finance Analyst
Ashlee Pate
- Program Coordinator, Educator Loan Forgiveness Program
Taryn Omran
- Controller
Trisha Esquibel
- Grant Accountant
Theresa Tran
- Accountant
Bharathy Wimalanathan
- Accountant
Janisse Kadima
- Fiscal and Reporting Monitor
Corey Evan
- COF Administrator
Peggy Hill
- COF Analyst
Cholok (Coco) Marial

Georgia Nonpublic Postsecondary Education Commission

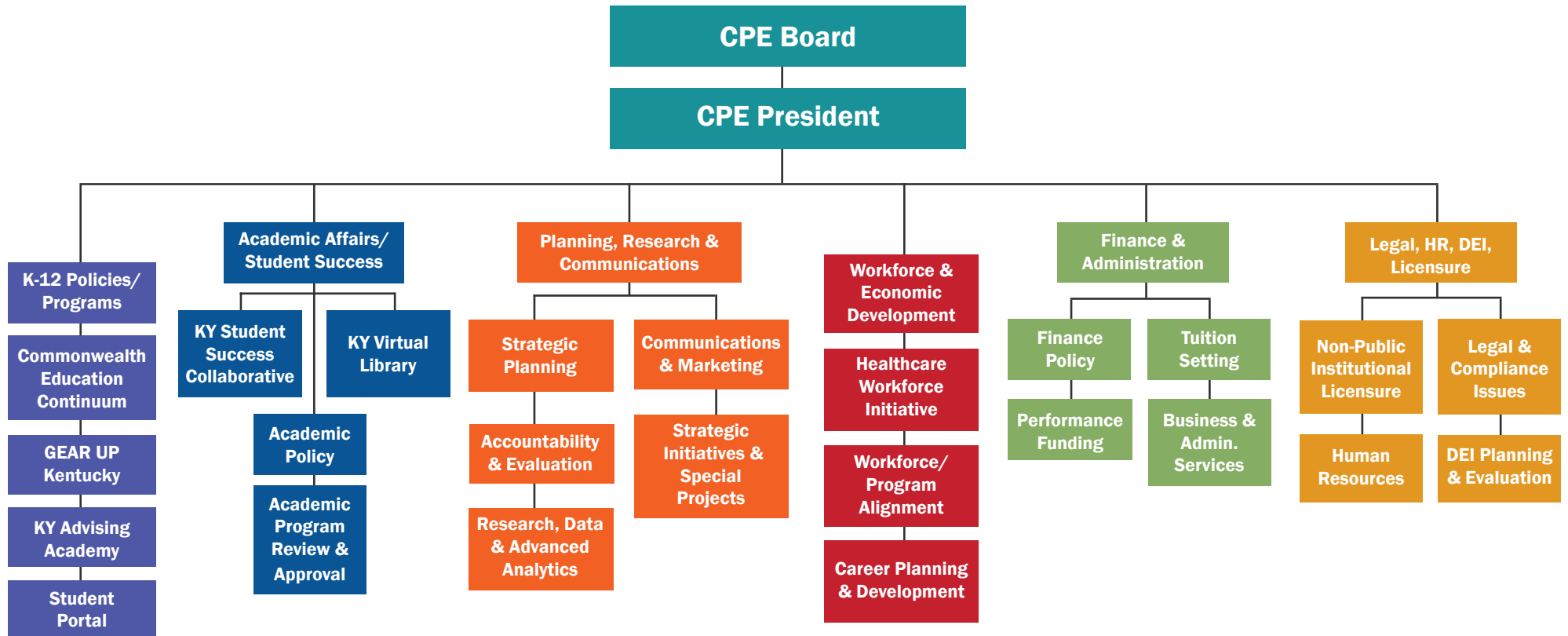
FY23

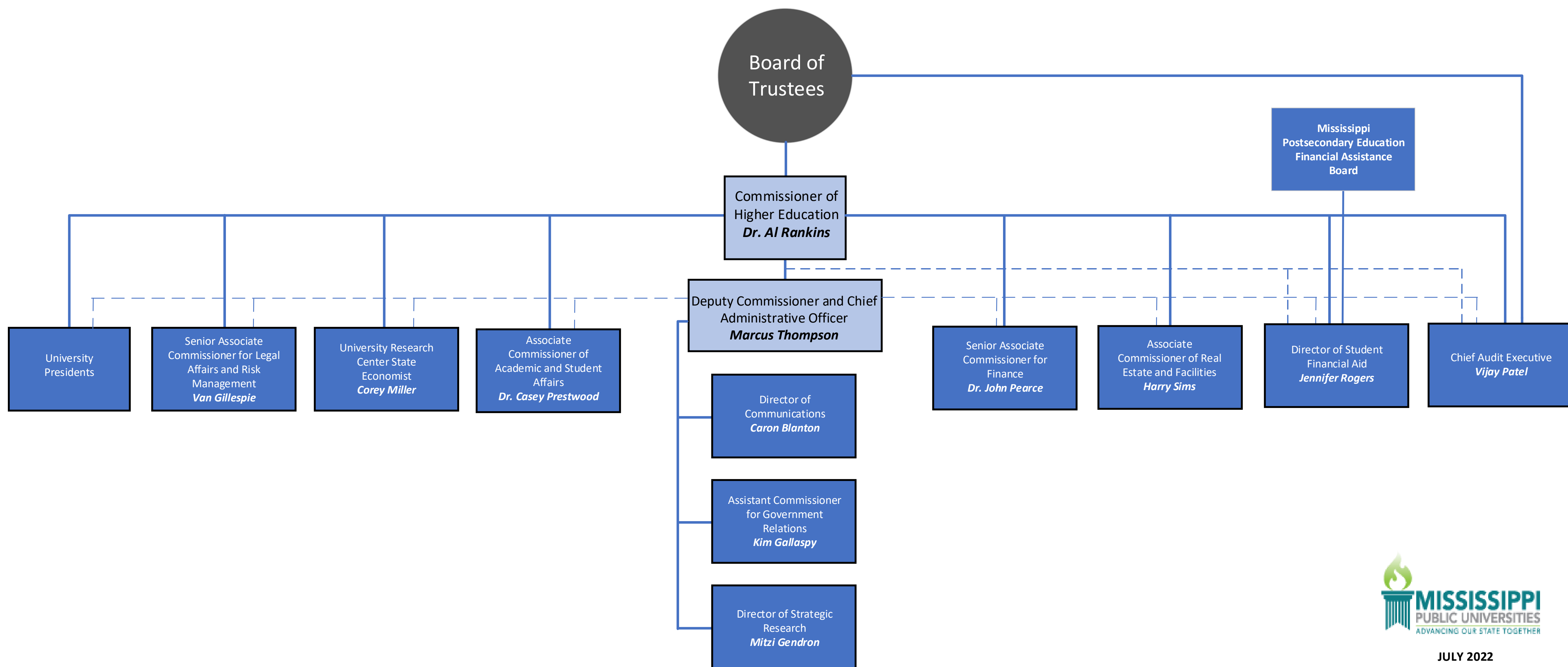




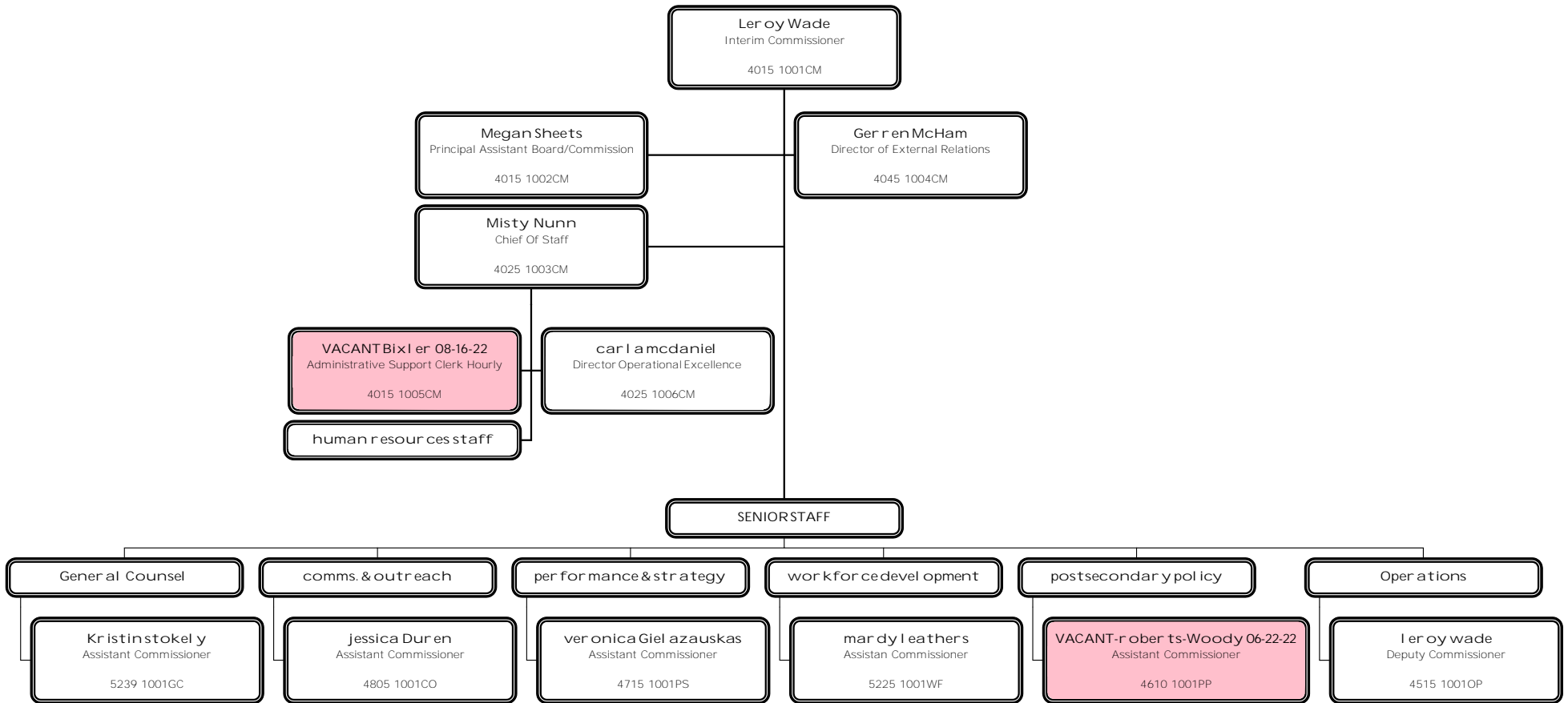
KENTUCKY COUNCIL ON POSTSECONDARY EDUCATION

Organizational Structure



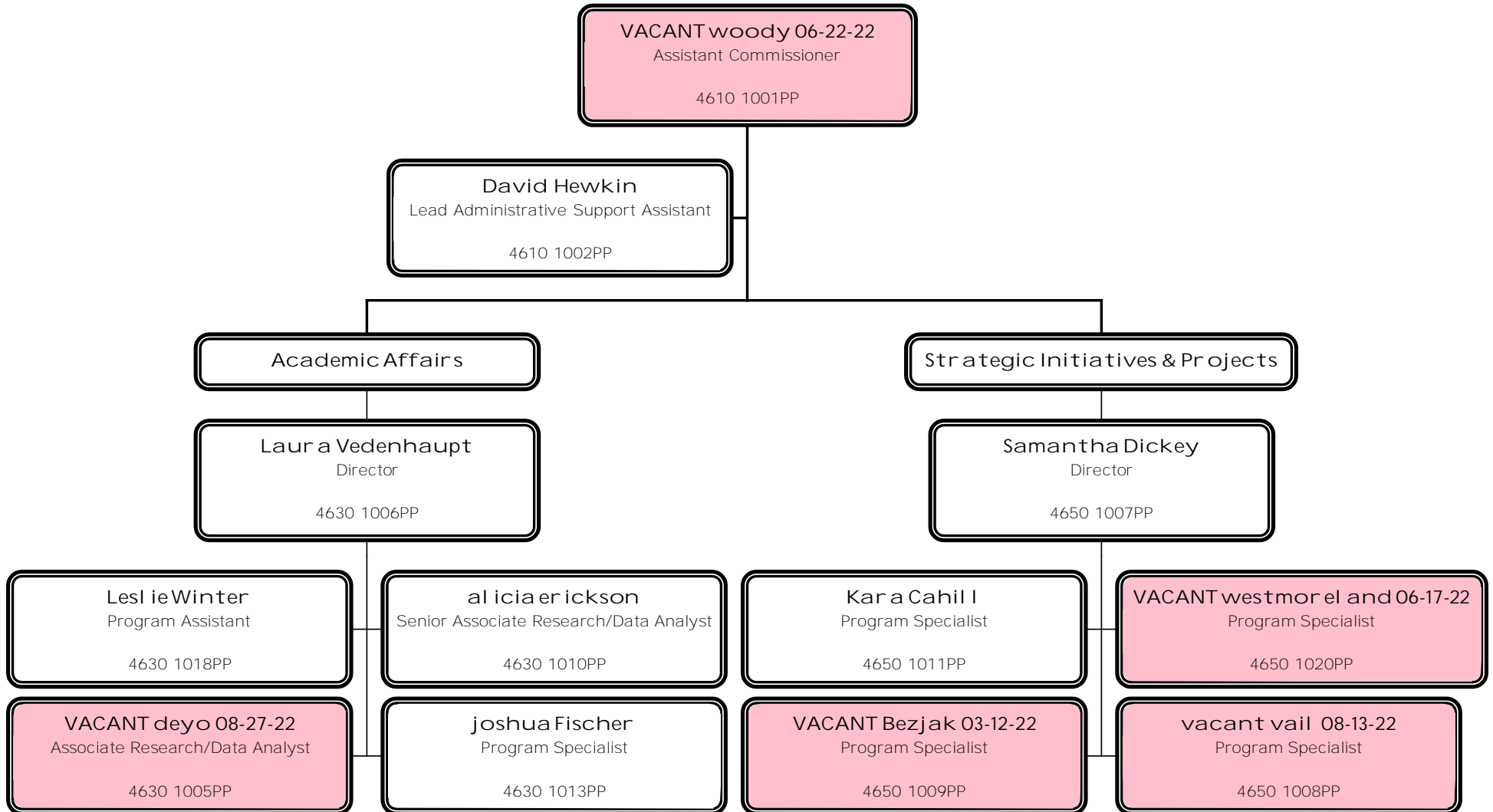


**DEPARTMENT OF HIGHER EDUCATION AND WORKFORCE DEVELOPMENT
COMMISSIONER'S OFFICE
Effective 08/16/2022**



**DEPARTMENT OF HIGHER EDUCATION AND WORKFORCE DEVELOPMENT
OFFICE OF POSTSECONDARY POLICY**

Last Modified 08/15/2022





Pennsylvania State Board of Private Licensed Schools
Organizational Chart

